

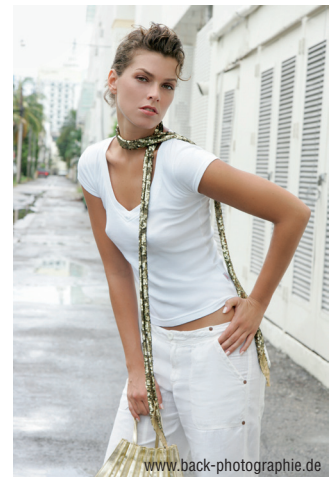


PRODUCT DATASHEET

PSR290 Portrait Silk Raster Pro

Technical data:

Weight	285 g/m ²
Thickness	265 μ
Opacity	99 %
Storage	15 - 30 °C (40 - 60% rF)



Description:

The Silk Raster specially bright white coated paper impresses with its premium weight and gives the print extra quality and stability. It feels very similar to a classical photo lab paper and the PSR290 is very suitable for high-quality portraits. In addition, due to the raster surface it is effective for scanning protection or against unwanted duplications.



Sizes

Sheets	Rolls	Core
10 x 15 (102 x 152 mm)	25,0 cm x 25 m (9,8")	3" *
13 x 18 (127 x 178 mm)	32,9 cm x 25 m (13")	3" *
15 x 20 (152 x 203 mm)	43,2 cm x 25 m (17")	3" *
DIN A4 (210 x 297 mm)	61,0 cm x 25 m (24")	3" *
DIN A3 (297 x 420 mm)	91,4 cm x 25 m (36")	3" *
DIN A3+ (330 x 483 mm)	106,7 cm x 25 m (42")	3" *
DIN A2 (420 x 594 mm)	111,8 cm x 25 m (44")	3" *
	127,0 cm x 25 m (50")	3" *

*) supplied with each two adapters 3" to 2" core

RGB-ICC profiles are available on www.tecco-photo.de

INKJET PAPER

Important: Before using our print media, please verify that it is suitable for use with your printer. We shall not assume liability for non-performance of the print media resulting from changes beyond our control in printing inks or printers. Specifications are subject to change without notice. This product data sheet is intended to be used as a guideline only.

Storing conditions: Please keep product in the supplied boxes for best possible protection. Product must be stored in a cool and dry environment, exposure to sun light is to be avoided.